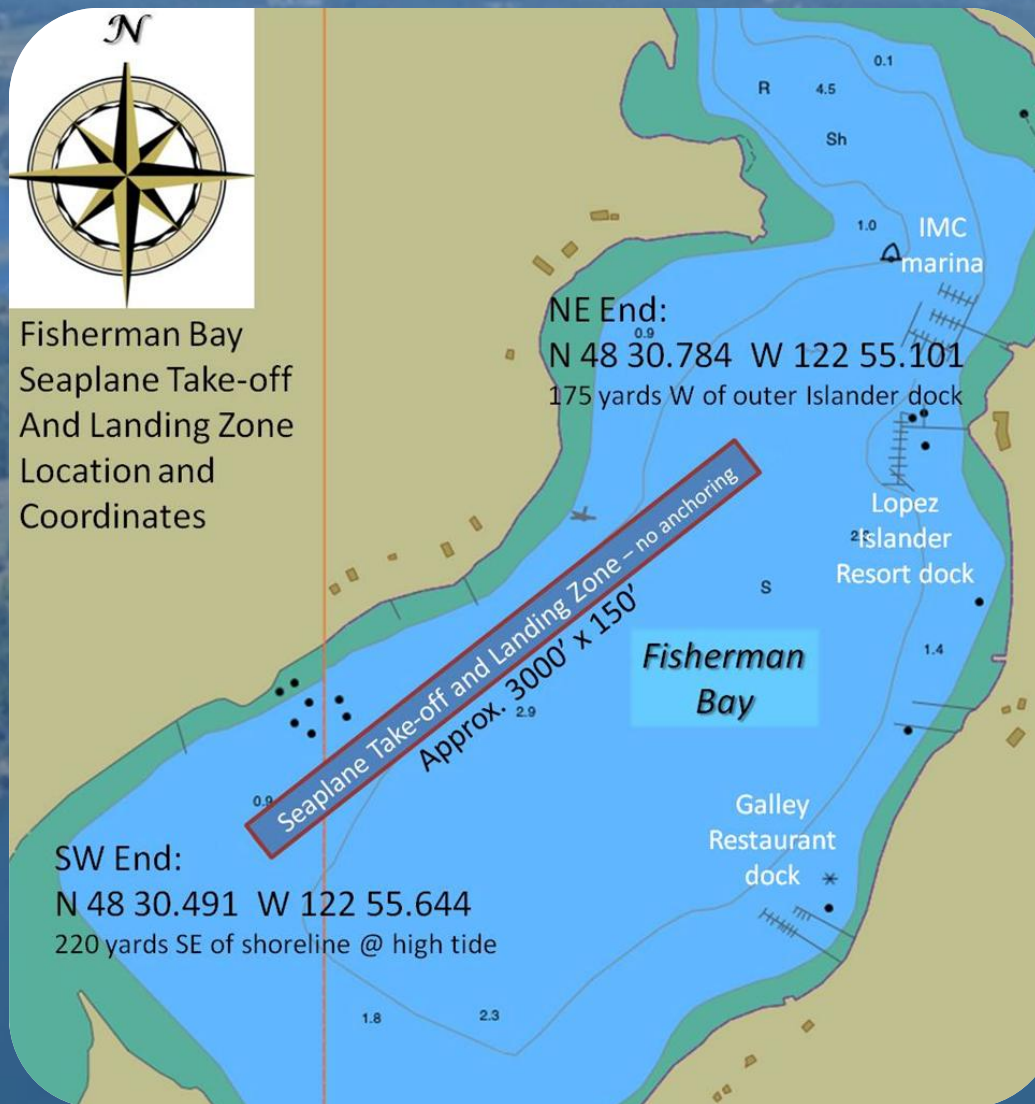


NOTICE TO BOATERS AND SEAPLANE PILOTS

During the summer months, the Port of Lopez asks boaters to seek anchorage outside the seaplane take-off and landing zone marked below, and seaplane pilots are advised to use this area to avoid moored and anchored boats in the bay.



We welcome you to Lopez Island and hope you have a pleasant and safe visit. Because Fisherman Bay can get crowded with boats and seaplanes during the summer months, the Port of Lopez needs your help. Please keep the designated take-off and landing zone clear while at anchor in the bay.

Thank you!

Background

During the last few years, the number of moored and anchored boats in Fisherman Bay has increased dramatically. This creates congestion that makes it difficult for seaplane pilots to safely fly into and out of Fisherman Bay during the busy summer boating season. Kenmore Air estimates that 20 scheduled flights are cancelled each summer due to congestion in the bay. These cancellations impact Kenmore and their passengers, as well as local businesses.

With each of us doing our part by staying clear of the identified landing zone, and asking others to do the same, we can keep Fisherman Bay a safe haven for seaplane operators and boaters alike.

Resources

Lopez Islander Resort

<http://www.lopezfun.com/>

The Galley

<http://www.galleylopez.com/>

Islands Marine Center

<http://www.islandsmarinecenter.com/>

Lopez Island Yacht Club

<http://www.lopezislandyachtclub.com/>

Kenmore Air

<http://www.kenmoreair.com/>

Fisherman Bay Marine Health Observatory

<http://fishermanbayproject.org/>

Port of Lopez

<http://www.portoflopez.com/>

WA State Department of Natural Resources

Note: All mooring buoys are required to be authorized by the WA State Dept. of Natural Resources (DNR). Proposed buoys must be authorized by DNR prior to installation.

For more information go to

<http://www.dnr.wa.gov/>

Welcome to Fisherman Bay Lopez Island, WA



Boaters and Seaplane Pilots

Boaters and seaplane operators need to share the limited space in Fisherman Bay. To ensure everyone's safety, the seaplane take-off and landing zone identified within must be kept clear at all times.

**Look inside to find out
how you can help!**

*For more information or to report a
problem, call (360)468-4116*